

## HONG KONG NEIGHBOURHOODS...

### TSEUNG KWAN O

#### GENERAL VIBE

Located by a long, narrow inlet in the southern part of Sai Kung District in the Southeast New Territories, Tseung Kwan O is flanked by Clear Water Bay Peninsula to the east, Tseung Kwan O Bay (also known as Junk Bay) to the south, East Kowloon to the west, and Tseng Lan Shue to the north. Most of the land here is reclaimed and the town centre was only developed about two decades ago, so the general feel is a little sterile, with most activity now taking place in malls. But there are villages short distances away worth visiting.

#### NEW HOTEL OPENINGS

Two new hotels opened late last year right next to the Tseung Kwan O MTR station: the 300-room Holiday Inn Express and the 359-room Crowne Plaza Hong Kong Kowloon East. The station is only three stops away from the commercial hub of Quarry Bay on Hong Kong Island.

■ **3 Tong Tak Street;**  
tel +852 3199 5588; [www.hiexpress.com/kowlooneast](http://www.hiexpress.com/kowlooneast), tel +852 3983 0388;  
[www.crowneplaza.com/kowlooneast](http://www.crowneplaza.com/kowlooneast).

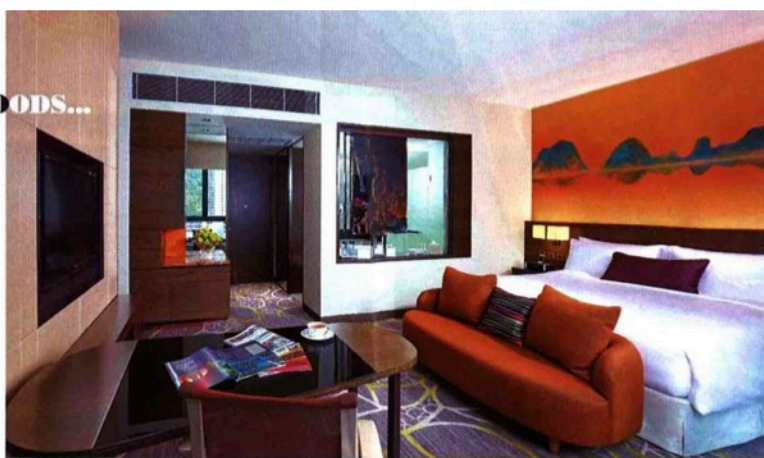
Business travellers on a long-term visit of at least a month or more can check out Vega Suites, a 173-suite serviced apartment complex located on the upper floors above Holiday Inn Express. ■ +852 3963 7888; [www.vegasuites.com.hk](http://www.vegasuites.com.hk)

#### TRANSPORT

Tseung Kwan O (TKO) is surrounded by steep hills on three sides, so the New Town is physically segregated from East Kowloon and Clear Water Bay Peninsula. In 1986, the TKO tunnel was constructed to improve road access to the area. In August 2002, the MTR Corporation opened the 12.3km TKO line, allowing for an easy commute by train to Quarry Bay in 15 minutes and Central in half an hour.

#### THE OLD

The abandoned Mau Wu Shan fortress, or observation post as it is also called, is worth a visit. It was built around 1898 to monitor maritime movements during the Qing Dynasty. It has been declared a Grade 1 historic building. Mau Wu Shan is also along one of the lesser-known hiking trails in Hong Kong.



**This pag from tope:** Crowne Plaza Superior Room Double and Holiday Inn Express Standard Seaview Room

#### THE NEW

The 1,790-hectare New Town includes the districts of Tsui Lam, Po Lam, Hang Hau, Town Centre, Tiu Keng Leng, Pak Shing Kok, Siu Chik Sha, Tai Chik Sha and Fat Tong O. It is a predominantly residential community of more than 300,000 people. In the last decade, after the opening of the MTR service, a number of new private housing estates have been developed.

#### TIME OUT/ENTERTAINMENT

The Island Golf Club Driving Range, which opened in 2010, is one of the largest in Hong Kong with 166 practice bays.

■ **3 Chi Shen Street;** tel +852 2513 9888; [www.islandgolf.com.hk](http://www.islandgolf.com.hk).

Shaw Studios is also quite impressive – the huge complex houses sophisticated film production facilities, and can be booked for corporate events.

■ **201 Wan Po Road;** tel +852 3123 1111; [www.shawstudios.hk](http://www.shawstudios.hk)

Residential estates are clustered around the MTR stations along the Tseung Kwan O line and many are mixed-use developments that include sprawling shopping malls. These malls offer diverse retail, F&B and entertainment options. Local colour can be found in the homegrown shops in these complexes; the new Popcorn Mall above Tseung Kwan O

## EASTERN FRONTIER

Across the harbour on the East of Hong Kong's Kowloon side is the up-and-coming district of Tseung Kwan O. It has both villages and new developments to offer, and houses many residents and malls as well as some hidden gems, writes Gigi Onag

MTR station is particularly trendy, with a lot of upscale international brand shops.

■ +852 3543 1273; [www.popcorn.tko.com.hk](http://www.popcorn.tko.com.hk)

Po Lam's Metro City Phase II Mall houses popular brands such as H&M and Zara.

■ **8 Yan King Road;** tel +852 3194 3200; [www.metrocityplaza.com](http://www.metrocityplaza.com)

For atmospheric dining, Cielo on the 47th floor of Crowne Plaza is appealing, especially if you want to enjoy some alfresco bar action afterwards. For some pampering, Sense of Spa on the hotel's third floor has seven private garden rooms in which to unwind.

For an altogether different vibe, check out the villages, where a range of interesting places to eat can be found. One of the more popular restaurants among locals is Lardos Steak House, known for serving five-star restaurant steak in a no-frills environment. Its menu includes a range of steaks (costing between HK\$135-199/US\$17-26), pasta and seafood.

■ **10-12B G/F Hang Hau Village;** tel +852 2719 8168; <http://tcdeli.com/lardos-steak-house/home/>

For those craving the beach, Sai Kung is just a short ride from the new town – it's one of the cleanest in Hong Kong and the seafood around the area is well worth the trip. ■